

State of Wyoming Corner Record

(In compliance with the CORNER PERPETUATION AND FILING ACT, Wyoming Statutes, 1997 Section 33-29-140 et. seq., and the Rules and Regulations of the Board of Professional Engineers and Professional Land Surveyors)

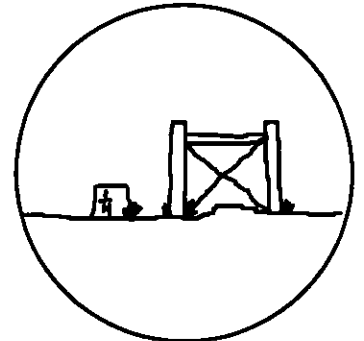
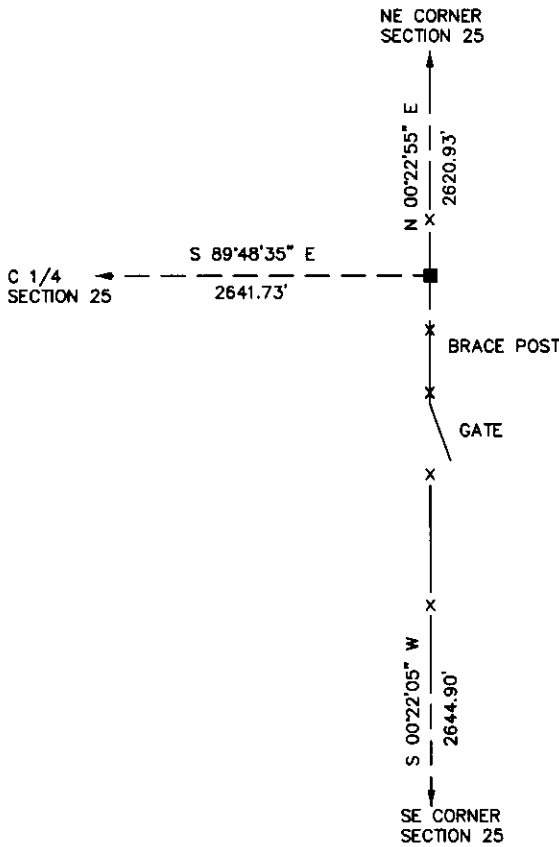
Reverse side of this form may be used if more space is needed.

Record of original survey and citation of source of historical information (if corner is lost or obliterated). Description of corner monumentation evidence found and/or monument and accessories established to perpetuate the location of this corner. Sketch of relative location of monument, accessories, and reference points with course and distance to adjacent corner(s) (if determined in this survey). Method and rationale for reestablishment of lost or obliterated corner.

MONUMENT FOUND: FOUND WHITE GRANITE STONE 6" X 10", 5" EXPOSED WITH 1/4 ON WEST FACE.

MONUMENT SET: NOTHING SET

REFERENCES: MONUMENT LIES IN A NORTH-SOUTH FENCE LINE, JUST NORTH OF THE BRACE POST. NO OTHER TIES AVAILABLE.



Date of Field Work: 12/19/00

Office Reference: 20307

Monument Inscription

Cross Index Plat

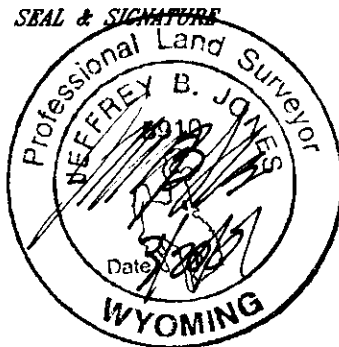
	1	2	3	4	5	6	7	8	9	10	11	12	13	14	15	16	17	18	19	20	21	22	23	24	25		
A	+	+	+	+	+	+	+	+	+	+	+	+	+	+	+	+	+	+	+	+	+	+	+	+	+	+	A
B	+	+	+	+	+	+	+	+	+	+	+	+	+	+	+	+	+	+	+	+	+	+	+	+	+	+	B
C	+	6	+	5	+	4	+	3	+	2	+	1	+	C													C
D	+	+	+	+	+	+	+	+	+	+	+	+	+	D													D
E	+	+	+	+	+	+	+	+	+	+	+	+	+	E													E
F	+	+	+	+	+	+	+	+	+	+	+	+	+	F													F
G	+	7	+	8	+	9	+	10	+	11	+	12	+	G													G
H	+	+	+	+	+	+	+	+	+	+	+	+	+	H													H
J	+	+	+	+	+	+	+	+	+	+	+	+	+	J													J
K	+	+	+	+	+	+	+	+	+	+	+	+	+	K													K
L	+	18	+	17	+	16	+	15	+	14	+	13	+	L													L
M	+	+	+	+	+	+	+	+	+	+	+	+	+	M													M
N	+	+	+	+	+	+	+	+	+	+	+	+	+	N													N
O	+	+	+	+	+	+	+	+	+	+	+	+	+	O													O
P	+	19	+	20	+	21	+	22	+	23	+	24	+	P													P
Q	+	+	+	+	+	+	+	+	+	+	+	+	+	Q													Q
R	+	+	+	+	+	+	+	+	+	+	+	+	+	R													R
S	+	+	+	+	+	+	+	+	+	+	+	+	+	S													S
T	+	30	+	29	+	28	+	27	+	26	+	25	+	T													T
U	+	+	+	+	+	+	+	+	+	+	+	+	+	U													U
V	+	+	+	+	+	+	+	+	+	+	+	+	+	V													V
W	+	+	+	+	+	+	+	+	+	+	+	+	+	W													W
X	+	31	+	32	+	33	+	34	+	35	+	36	+	X													X
Y	+	+	+	+	+	+	+	+	+	+	+	+	+	Y													Y
Z	+	+	+	+	+	+	+	+	+	+	+	+	+	Z													Z
	1	2	3	4	5	6	7	8	9	10	11	12	13	14	15	16	17	18	19	20	21	22	23	24	25		

Firm/Agency, Address

STEIL SURVEYING SERVICES LLC
1102 WEST 19th STREET
CHEYENNE WY 82001

Telephone Number: **(307) 634-7273**

This corner record was prepared by me or under my direction and supervision.



Corner Name EAST 1/4 Corner Section 25, T 13 N, R 68 W, 6th P.M.

Cross-Index No.: T-25

County: LARAMIE Wyoming

RECORDED 7/07/2009 AT 8:32 AM REC# 526182 X# 2121 PG# 855
 DEBRA K. LATHROP, CLERK OF LARAMIE COUNTY, WY PAGE 1 OF 1